

EXPERT DESIGNERS AND MANUFACTURERS OF
QUALITY BRANDED AND PROMOTIONAL LOGO MATS



DELIVERY WITHIN
5 DAYS OF ORDER



+IDEAL FOR ALL PUBLIC BUILDINGS
+COST EFFECTIVE AND DURABLE
+MADE WITH NON TRIP MATERIAL

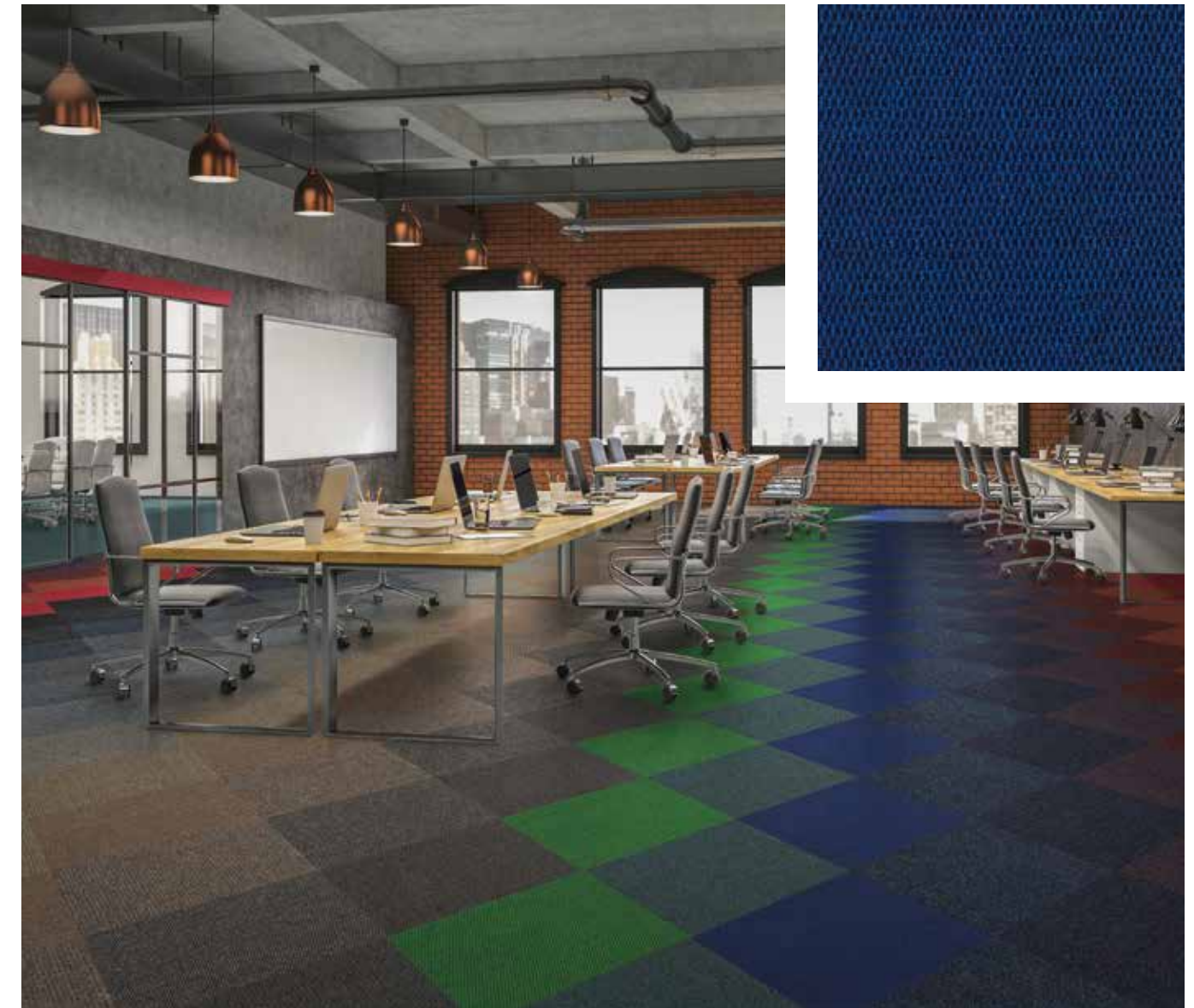


+CUSTOM MADE TO ENSURE FULL CUSTOMER
SATISFACTION
+BRANDED MATS ENSURE FULL BRAND ENFORCEMENT
+MATS CAN BE WASHED AND ARE MOVABLE



Berber Point 920.

The undisputed heavyweight champion, now with the inclusion of new bright exploding colours offers limitless combinations. Versatile, rugged and reliable, Berber Point 920 still remains the NO.1 choice for architects.



Berber Point 920 | Mixed

Extended Specifications

	ResinBac Broadloom	ResinBac Tiles	NexBac Tiles
Construction	Structured Needlepunch	Structured Needlepunch	Structured Needlepunch
Product Description	Heavy Commercial, PP, Needlepunch, ResinBac Tile/Broadloom	Heavy Commercial, PP, Needlepunch, ResinBac Tile/Broadloom	Heavy Commercial, PP, Needlepunch, Bitumen Tile
Fibre Type	Stainproof Miracle Fibre (Polypropylene) & Stainproof Eco Fibre Blend	Stainproof Miracle Fibre (Polypropylene) & Stainproof Eco Fibre Blend	Stainproof Miracle Fibre (Polypropylene) & Stainproof Eco Fibre Blend
Fibre Mass	920g/m ²	920g/m ²	920g/m ²
Recycled Content	Face Fibre (certain colours)	Face Fibre (certain colours)	Face Fibre (certain colours) & Backing (NexBac Eco on request)
Use Classification	Heavy Commercial	Heavy Commercial	Heavy Commercial
Total Thickness	7mm (±0.5mm)	7mm (±0.5mm)	8.5mm (±0.5mm)
Total Mass	±1317g/m ² **	±1317g/m ² **	±3892g/m ² **
Standard Size	3.66m	50 x 50cm	50 x 50cm***
Fire Index	2 (SANS 10177-IV)	2 (SANS 10177-IV)	3 (SANS 10177-IV)
Colour fastness to:			
(i) Light	7 (ISO 105-B02)	7 (ISO 105-B02)	7 (ISO 105-B02)
(ii) Rubbing	(a) Wet 4-5 (ISO 105-X12) (b) Dry 4-5 (ISO 105-X12)	(a) Wet 4-5 (ISO 105-X12) (b) Dry 4-5 (ISO 105-X12)	(a) Wet 4-5 (ISO 105-X12) (b) Dry 4-5 (ISO 105-X12)
(iii) Water	4-5 (ISO 105-E01)	4-5 (ISO 105-E01)	4-5 (ISO 105-E01)
Electrostatic Propensity	Less than 2.0kV (ISO 6356 & EN1307)	Less than 2.0kV (ISO 6356 & EN1307)	Less than 2.0kV (ISO 6356 & EN1307)
VOC Tested	Passed	Passed	Passed

BILL OF QUANTITIES:

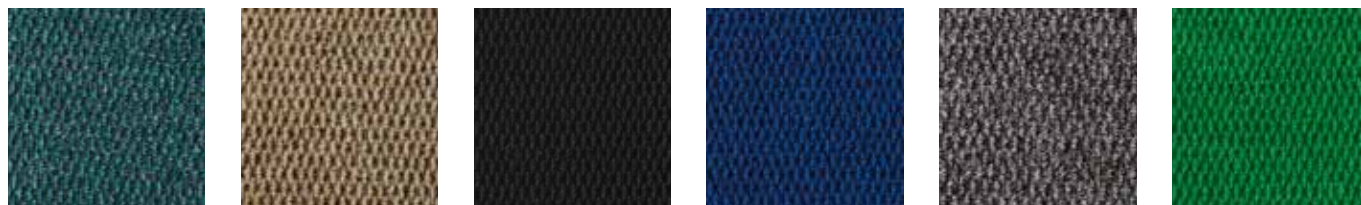
- Belgotex BERBER POINT 920 3.66m ResinBac Broadloom, BERBER POINT 920 50cm x 50cm ResinBac and NexBac tiles are manufactured from Stainproof Miracle fibre (Polypropylene) & Stainproof Eco Fibre Blend (Polypropylene).
- This product is to be laid in accordance with SANS 10186 fitting code of practice.
- Belgotex BERBER POINT 920 ResinBac and NexBac tiles must be tessellated at installation.
- Belgotex recommends the use of carpet protector mats where castor wheels are used.

** Weighted Average *** Also available in 60 x 60cm, 1m x 50cm, 1m x 1m NexBac tiles, 25cm x 100cm and 30cm x 120cm NexBac plank tiles. As these sizes and backings are not standard, minimum production quantities apply. Please contact your nearest Belgotex representative for more information.

Berber Point 920.

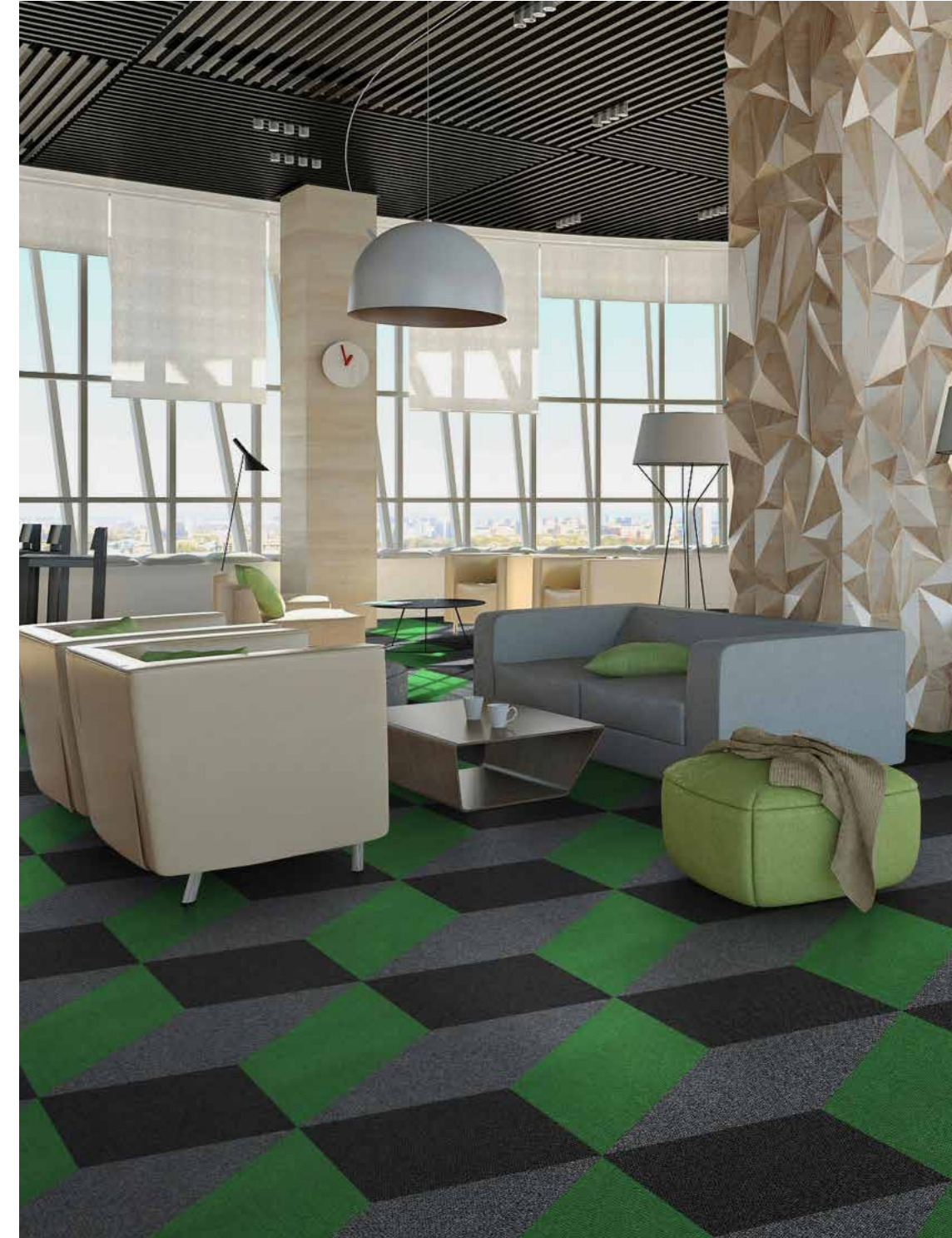


Berber Point 920 | Jute, Senegal, Neutral Beige, Cavern & Onyx

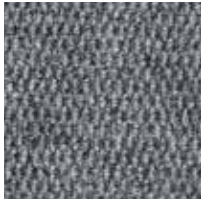


Neon Neutral Beige Onyx Sapphire Senegal Shamrock

The versatility of Berber Point 920 allows you to create visual displays that go beyond the conventional and defy the norm. You'll be guaranteed a masterpiece no matter how you choose to pen your design.



Berber Point 920 | Shamrock, Cavern & Storm



Steel Grey



Storm



Turkey

Drawing Inspiration
With inspiration gained from every shape, colour and turn, and drawing its creativity from the world, it is no wonder Berber Point 920 is the best choice for today's high-paced lifestyles.